

Park to Park in the Dark

The Starry-est Route in America

[Park to Park in the Dark](#) is Nevada's first astrotourism route that connects two International Dark Sky Parks, Death Valley National Park and Great Basin National Park, via Highways US-95 and US-6, and the rural communities along the route: Beatty, Goldfield, Tonopah, Ely and Baker. The ability to see pristine dark sky landscapes is becoming inaccessible for

billions of people around the world. Light pollution has crept up on humanity. Astro-tourism -- tourism using the natural resource of unpolluted night skies for astronomical, cultural, or environmental activities -- is on the rise as people are seeking environmentally sustainable travel opportunities for astronomy and stargazing pursuits.

Photo Credit: Kelly Carroll, Ward Charcoal Ovens State Historic Park



ELIZABETH WOOLSEY, PARK TO PARK IN THE DARK COORDINATOR

AND STARGAZER INN & BRISTLECONE GENERAL STORE OWNER



Photo Credit: Kirk Peterson, Goldfield, NV

LEGISLATION TO PROTECT THE NIGHT SKIES OF NEVADA

Nevada has an incredible asset in the dark night sky. Astro-tourism addresses the local community’s strategy for tourism diversification to maximize business, industry and economic growth.

The recently signed SB52 legislation sponsored by former Lieutenant Governor, Kate Marshall, is designed to educate and inform the public about the values, benefits, and preservation of Nevada’s dark night skies. These are important natural and cultural resources that, if stewarded carefully, represent an important opportunity and competitive advantage for the growing recreation economy in Nevada. The Park to Park team is working together to

protect and promote the dark night sky so it can be shared with visitors from around the globe and create another driver for the tourism economies of rural Nevada communities. Travelers will experience Nevada’s breathtaking natural and cultural landscape and the astronomical wonders above the horizon line on the “Starry-est Road in America.”

RURAL MARKETING GRANTS

In March 2021, the White Pine Main Street Association was awarded a \$6,000 rural marketing grant from Travel Nevada for building the itinerary and developing the logo, poster, and map for the route.

The White Pine Main Street Association received a second Travel Nevada rural marketing grant for \$10,000 (July 2021-June 2022) to design the Park to Park in the Dark website and brochure.



Harmony Borax Works, Furnace Creek, CA



Photo Credit: Michael Okimoto



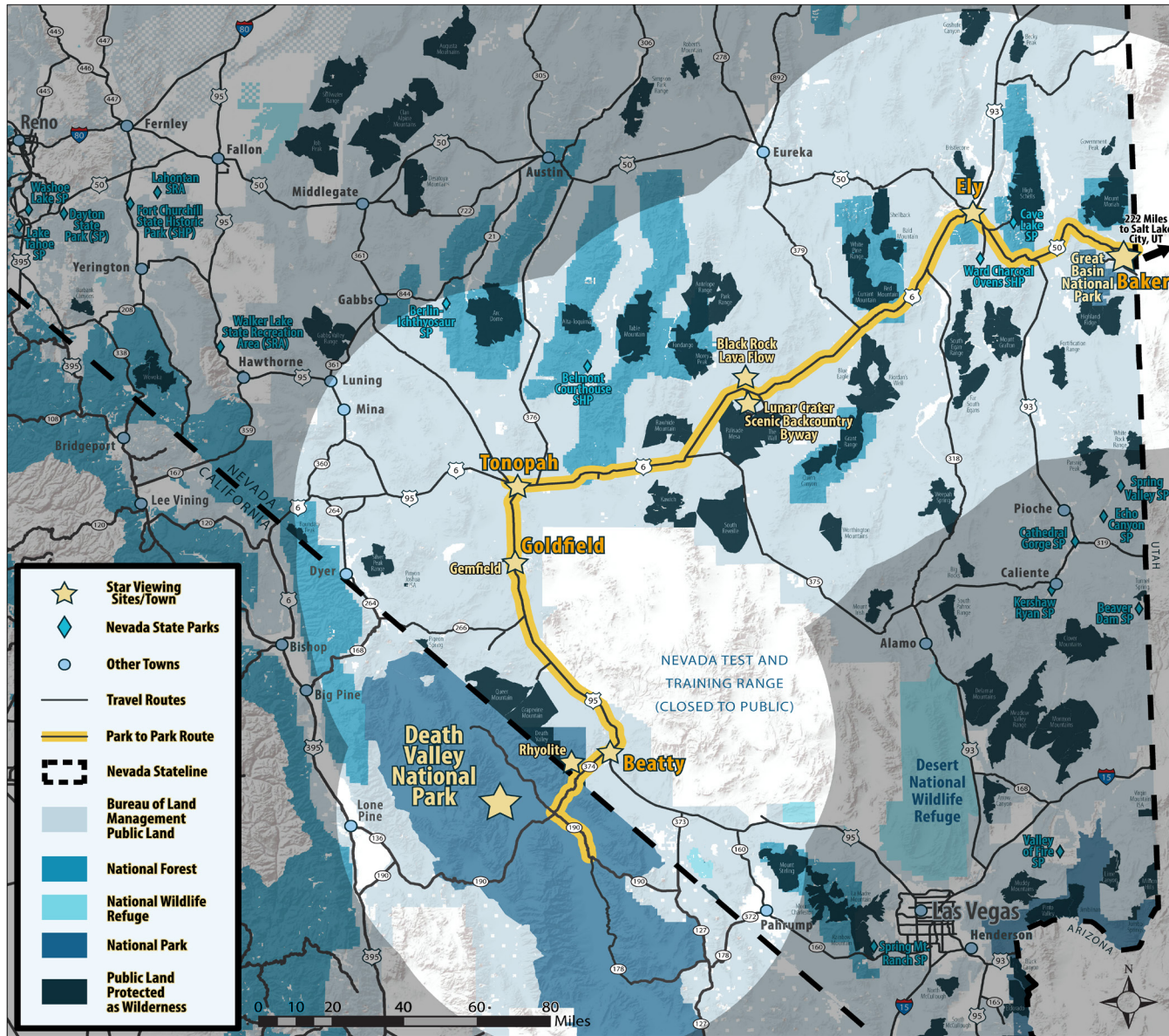
LEARN MORE

- parktoparkinthedark.org
- greatbasinheritage.org



PARK TO PARK IN THE DARK

BASIN AND RANGE DARK SKY COOPERATIVE MEMBER SPOTLIGHT



DESTINATIONS

- Great Basin National Park
- Baker
- Ely
- Tonopah
- Goldfield
- Beatty
- Death Valley National Park

SIGHTS

- Bonnie Claire Playa
- Gemfield Backcountry Road
- Lunar Crater Backcountry Byway
- Black Rock Lava Flow
- Camp Success Loop
- White River Loop

NATIONAL FOREST

- Humboldt-Toiyabe National Forest



PARK TO PARK IN THE DARK

BASIN AND RANGE DARK SKY COOPERATIVE MEMBER SPOTLIGHT